



Radio Monitoring



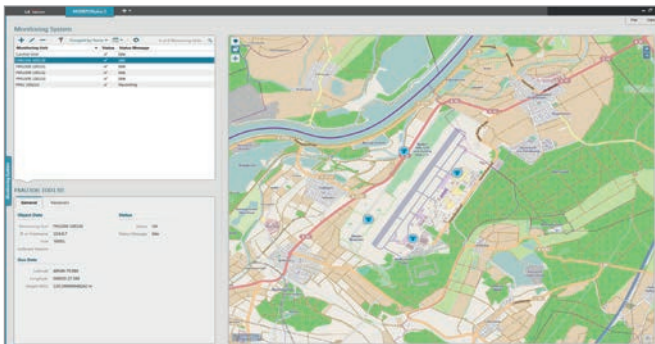
Centralized management of monitoring units & measurement analysis

LS OBSERVER
Central Monitoring Software (CMS)

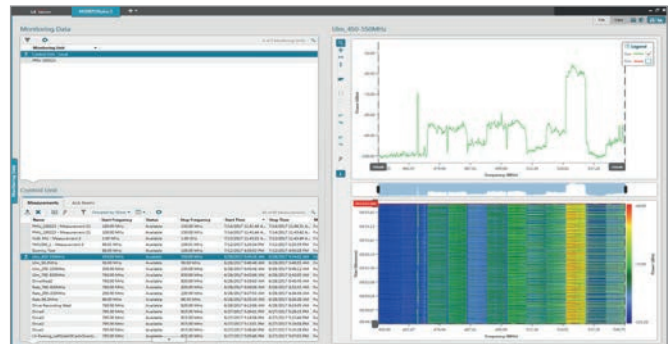
LS OBSERVER **CENTRAL MONITORING SOFTWARE (CMS)**

- User management
- Configuration of RMUs*
- Control of RMUs*
- Investigation of RMUs* status
- Visualization of RMU* activities alarms
- Visualization of RMU* measurements (live / stored)
- Central result storage where required
- Signal analysis
- Replay of recorded signals (IQ, radio)
- Visualization, overlay & compilation of group measurements:
 - TDoA, GROA+® and AoA
- Visualization of AVD events
- Interface to
 - RMU(s)*
 - SPECTRA_DB
 - myMONITOR
 - SpectrumMap
 - MONITORplus

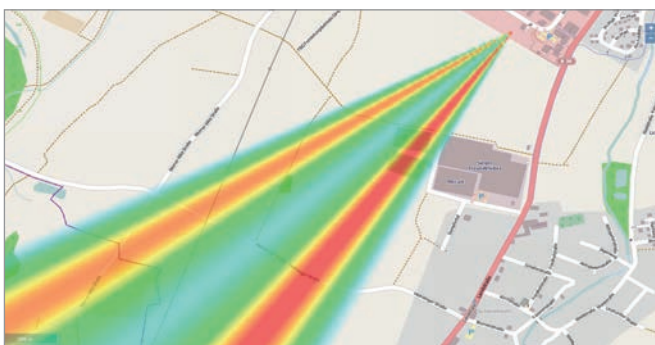
* LS OBSERVER Remote Monitoring Unit



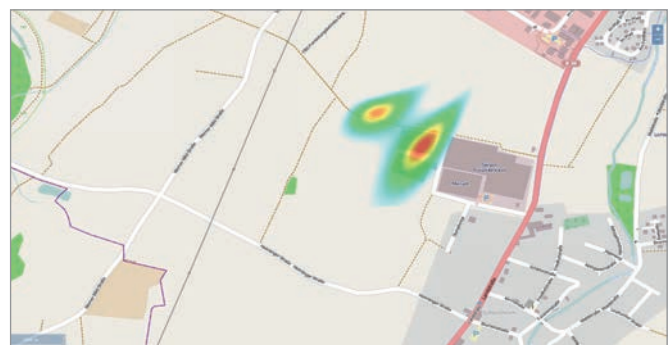
LS OBSERVER Network Configuration



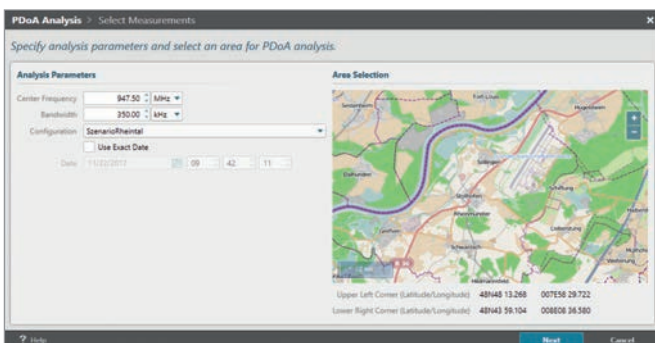
FFT & Waterfall Spectrum View



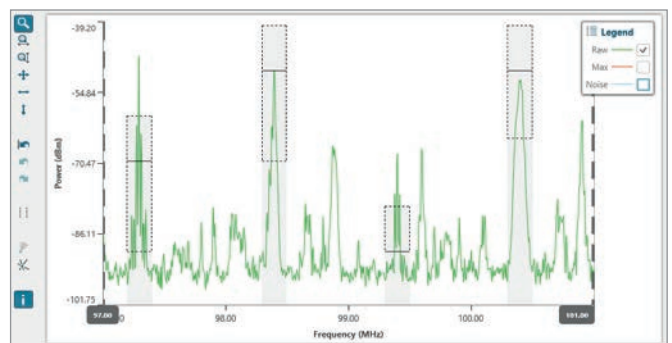
DoF of Co-Channel signals with one unit



Multi-Spot Geolocation via TDoA



Analysis settings for GROA+®



Automatic Violation Detection

For further information, please visit our website www.LStelcom.com or contact Info@LStelcom.com.